



Designed by Kay Alliband this 'time-line' logo was created to mark the formation of Ray Park Heritage Group's first meeting in 2005

ABORIGINE:

The Indigenous Wallumedegal people who used the forest for hunting kangaroo, koala, and possum and collected freshwater mussels along the creeks;

MAN AND HORSE:

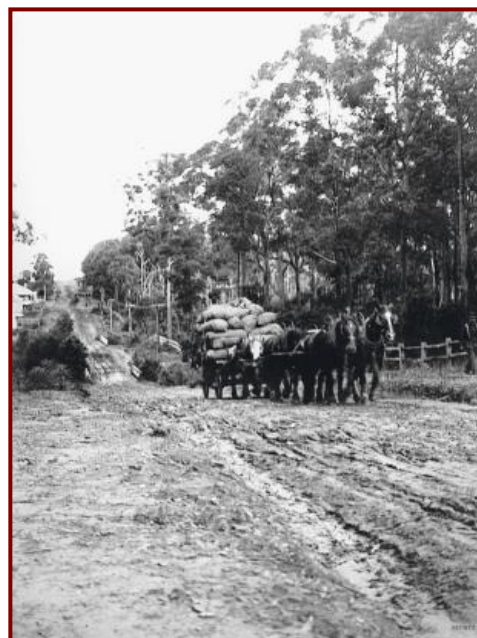
The timber getters who logged the forest between 1816 and 1835;

PIGS, CATTLE, POULTRY, FRUIT, VEGETABLES, FLOWERS:

The small farms, dairies, orchards, and nurseries that developed after the land was cleared;

HOUSES:

The suburban homes and gardens that were built when the housing estates were developed in the 1960s



Ray Road Epping c.1902

Bags of bones en route to Wooster's Fertiliser Mill

Photographer: Rex Hazlewood
Mitchell Library, State Library of NSW

RAY PARK HERITAGE GROUP INCORPORATED

54 Bambara Crescent

Beecroft NSW 2119

(02) 9876 5713 phone

rpheritage@netspace.net.au email

BSB: 633-000, Account: 184423119

*This project has been supported through a
City of Parramatta Community Grant*

Ray Park Heritage Group Incorporated

**GROUP
OBJECTIVES**

**MEMBERSHIP
APPLICATION**



'Timber Jinker & Orchards, Carlingford

- looking towards corner of Murray

Farm & Orchard Roads

Photographer: Rex Hazlewood
Mitchell Library, State Library of NSW

About

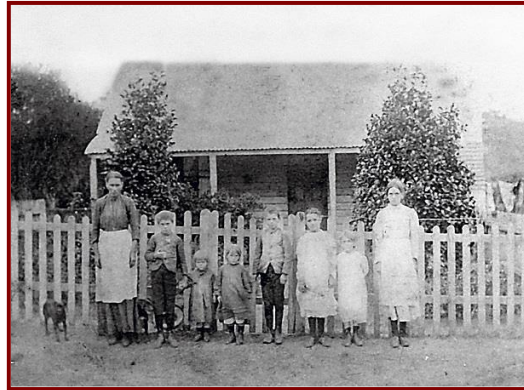
Ray Park Heritage Group

Ray Park Heritage Group is an incorporated body managed by a committee elected by the members.

The Group is concerned with the preservation of the local history of the area bounded by the creek catchments and adjacent lands of Carlingford Road, Beecroft Road, the M2 Motorway and Pennant Hills Road.

OUR OBJECTIVES:

- Foster an interest in local history and surrounding areas by interchange of information among members of the group.
- Collect and coordinate local history accurately assisting with conservation and promotion of the heritage of City of Parramatta.
- Arrange displays of historical photographs and information acknowledging source and in particular photographs courtesy of the photographer or provider.
- Arrange days of celebration with an appropriate theme.
- Liaise with appropriate local schools on local history/bush care/environment.
- Liaise with appropriate Bush Regeneration groups.
- Maintain contact with City of Parramatta Council (CoP) regarding the Pioneers' Track, while keeping association with Hornsby Shire Council, the areas local council 1906-2016.



House and Family (name unknown)
Pennant Parade, Carlingford

Remember -

the way we were

is the motto of the Group and our quarterly Newsletter features stories by descendants of original settlers and families who have moved into the area over the years.

The Group strongly believe in not only preserving historical photographic evidence but also documented memories about the lives of those who came after the pioneers in order to provide insight for future generations.

New Members Welcome

If you would like to become a member of Ray Park Heritage Group Inc. simply complete the Application for Membership form and send it along with the initial joining fee

Application for Membership

Ray Park Heritage Group Inc.

Initial Joining Fee: \$20.00
(includes Annual Membership Fee)

Annual Membership Fee: \$15.00

Name: _____

Address: _____

Phone: _____

Email: _____

Tick for New Membership

enclosed \$20.00: ☐

Tick for Renewal Membership

enclosed \$15.00: ☐

Cheques should be made payable to:
Ray Park Heritage Group Inc.

Date Paid: _____

Post to:

**54 Bambara Crescent,
BEECROFT NSW 2119**

